



# Migrate to Monarch.™

## Monarch™ DNA Cleanup Kits

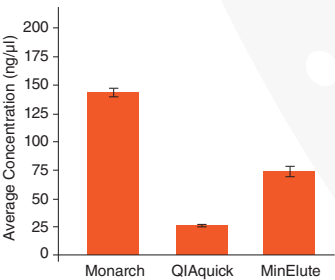


Promotion End: **March 31st, 2017**

The **Monarch™ DNA Gel Extraction Kit** can be used to quickly purify DNA from agarose gels. Unlike other kits, there is no need to add isopropanol to the melted agarose prior to loading on the column, saving you a step.

The **Monarch™ PCR & DNA Cleanup Kit (5 µg)** can be used to purify DNA from a variety of enzymatic reactions. The DNA Wash Buffer provided ensures enzymes, short primers (≤ 25 nt), detergents and other low-molecular weight reaction components are removed.

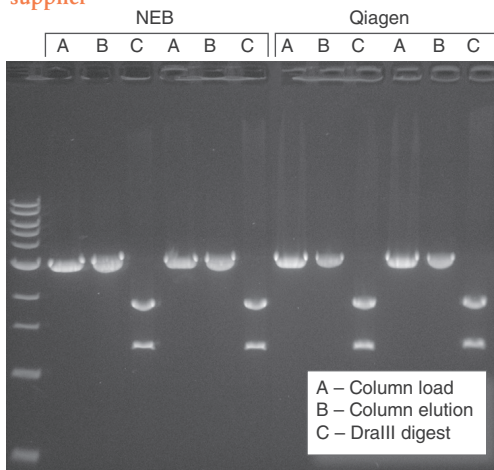
DNA purified using the Monarch DNA Gel Extraction Kit is recovered with similar efficiency and purity as the leading supplier, but is more highly concentrated, facilitating its use in downstream applications



	Monarch	QIAquick®	MinElute®
$A_{260}/A_{280}$	1.9+/-0.08	1.9+/-0.08	1.9+/-0.04
Yield (µg)	0.80+/-0.05	0.72+/-0.09	0.66+/-0.13
Conc. (ng/µl)	144.9+/-9.6	25.7+/-3.1	73.8+/-14.2

One microgram aliquots of a 3 kb fragment were resolved on a 1% w/v agarose gel, excised, and processed with different kits using manufacturer-specified minimum elution volumes. Values reported are the concentration and purity data determined by Nanodrop™ readings, as well as recovery calculations based on the eluted DNA concentration and recovered volume.

Monarch PCR & DNA Cleanup Kit (5 µg) performs equivalently to the leading supplier



Preps were performed according to recommended protocols. 1 µg of a 3 kb DNA fragment was incubated with 1 µM primers and OneTaq® Quick-Load® 2X Master Mix (NEB #M0486). DNA was eluted in 20 µl (NEB) and 40 µl (Qiagen) Elution Buffer. Half of the total elution volume was digested with 5 units of DralIII-HF® (NEB #R3510). The digest and the unused portion of the elution were resolved on a 1% w/v agarose gel along with a representative sample of the starting material.

**NOW AVAILABLE AT MEDSTORE**

### Specifications

- **Binding Capacity:** up to 5 µg
- **DNA Size Range:** ~50 bp to 25 kb
- **Typical Recovery:** DNA (50 bp to 10 kb): 70–90% DNA (11–25 kb): 50–70%
- **Elution Volume:** ≥ 6 µl
- **Purity:**  $A_{260}/A_{280} \geq 1.8$
- **Protocol Time:**  
Gel Extraction: 10 min of spin and incubation time  
PCR & DNA Cleanup: 5 min of spin and incubation time
- **Compatible Downstream Applications:** ligation, restriction digestion, labeling and other enzymatic manipulations, library construction and DNA sequencing

### Ordering Information

NEB #	LIST PRICE	PROMOTIONAL PRICE
<b>Monarch DNA Gel Extraction Kit</b>		
T1020S - 50 preps	\$121	<b>\$84.71</b>
T1020L - 250 preps	\$560	<b>\$392.00</b>
<b>Monarch PCR &amp; DNA Cleanup Kit</b>		
T1030S -50 preps	\$121	<b>\$84.71</b>
T1030L - 250 preps	\$560	<b>\$392.00</b>



Request a free sample from your Territory Manager

Howard Cukier, Ph.D.  
Territory Manager, Ontario  
Cell: (416) 527-2352 | hcukier@neb.com



be INSPIRED  
drive DISCOVERY  
stay GENUINE