

HER3 Human Recombinant Antibody (MM-0316)



Catalog #: CR - 016

Size: 100 µg

Product Information

Name: HER3 Human Recombinant Antibody
Antigen: Human HER3 (ECD: Ser20 – Thr643)
Isotype: Human IgG1; custom orders also available as mouse IgG1, single chain IgG1 & single chain human-mouse IgG2a
Reactivity: Human
Clonality: Monoclonal
Source: Human (Expi293 cell line by Life Technologies)
Applications: ELISA and Flow Cytometry

Concentration: Lyophilized protein A-purified Antibody in DPBS pH 7.4; no preservatives added
Handling: Lyophilized antibody can be kept at 4°C for 3 months. To avoid freeze-thaw cycles, reconstituted antibody should be resuspended in H₂O and aliquoted before freezing for short term (-20°C) or for long term storage (-80°C). For maximum recovery of products, centrifuge the vial prior to removing the cap. Further dilutions can be made in assay buffer. A final stock concentration of 1 µg/µl is recommended.

Representative data

Capture ELISA

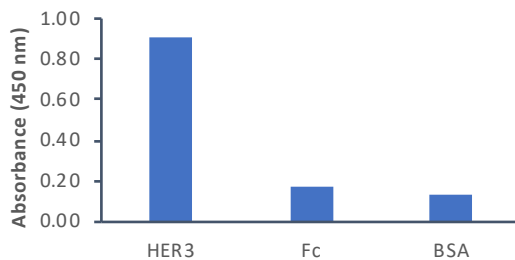


Figure 1: Capture ELISA of HER3:

1 µg/mL HER3 antigen and control proteins (Fc and BSA) are adsorbed onto Maxisorp plates, blocked with PBS + 0.5% BSA (PB), and washed 3 times with PBS + 0.05% Tween-20 (PT). 0.2 µg/mL of anti-HER3 hlgG1 antibody in PBS were incubated for 30 min, shaking RT, washed 6 times with PT. Anti-human kappa-HRP (1:5000 in PB) was incubated for 30 min, shaking RT, washed 6 times with PT. Colorimetric HRP reagents allowed for absorbance readings at 450nm.

Flow Cytometry

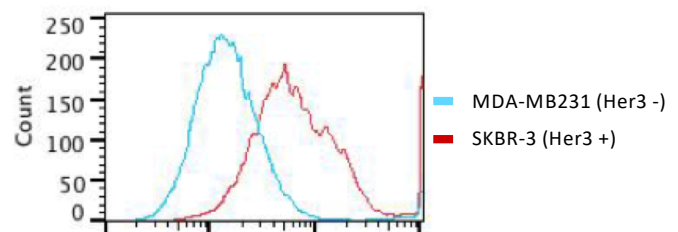


Figure 2: Flow Cytometry of HER3:

SKBR-3 cells were collected using a mild EDTA solution and washed in PBS; 5x10⁵ cells were incubated with 1 µg of anti-HER3 hlgG1 antibody in 100 µL PBS + 0.1% BSA for 30 min on ice, then washed twice with cold PBS + 0.1% BSA. Sample was then incubated with Goat anti-Human Fab-488 (Jackson ImmunoResearch, diluted with 1:1000 PBS + 0.1% BSA) for 15-30 min, washed twice with cold PBS + 0.1% BSA and fixed with 2% paraformaldehyde and filtered prior to reading on a FACS machine.

Antibody staining is not recommended after fixing cells

Optimal dilution of the antibody to be determined by the user

Limitations and Liability

For research use only not for human use; Manufactured by CCAB under a license for use of Expi293 cells (Life Technologies). CCAB is not responsible under any circumstances for any lost profit, loss of business, or any form of indirect, special, incidental, consequential, punitive, or treble damages, however caused, arising out of or relating to use of this product. This product is not for resale. Any modification of the antibody for commercial purposes is prohibited.