

TLR4 Human Recombinant Antibody (MM-0320)



Catalog #: CR - 020

Size: 100 µg

Product Information

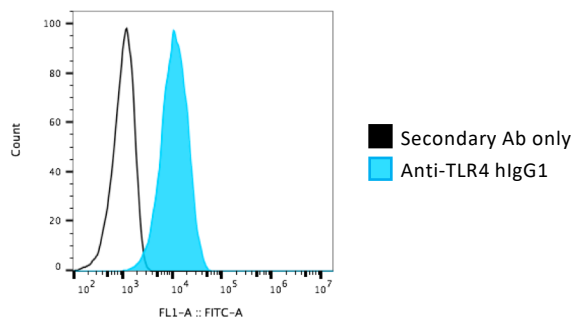
Name: TLR4 Human Recombinant Antibody
Antigen: Human TLR4 (ECD: Glu24 – Lys631)
Isotype: Human IgG1; custom orders also available as mouse IgG1, single chain IgG1 & single chain human-mouse IgG2a
Reactivity: Human
Clonality: Monoclonal
Source: Human (Expi293 cell line by Life Technologies)
Applications: ELISA and Flow Cytometry

Concentration: Lyophilized protein A-purified Antibody in DPBS pH 7.4; no preservatives added

Handling: Lyophilized antibody can be kept at 4°C for 3 months. To avoid freeze-thaw cycles, reconstituted antibody should be resuspended in H₂O and aliquoted before freezing for short term (-20°C) or for long term storage (-80°C). For maximum recovery of products, centrifuge the vial prior to removing the cap. Further dilutions can be made in assay buffer. A final stock concentration of 1 µg/µl is recommended.

Representative data

Flow Cytometry



Flow Cytometry of TLR4:

U937 cells were washed in PBS; 5×10^5 cells were incubated with or without 0.1 µg of anti-TLR4 hIgG1 antibodies in 100 µL PBS + 0.1% BSA (PB) for 30 min on ice, then washed twice with cold PB. Samples were then incubated with Goat anti-Human Fab-488 (Jackson ImmunoResearch, diluted 1:1000 PB) for 15-30 min, washed twice with cold PBS and fixed with 2% paraformaldehyde and filtered prior to reading on a FACS machine.

Antibody staining is not recommended after fixing cells

Optimal dilution of the antibody to be determined by the user

Limitations and Liability

For research use only not for human use; Manufactured by CCAB under a license for use of Expi293 cells (Life Technologies). CCAB is not responsible under any circumstances for any lost profit, loss of business, or any form of indirect, special, incidental, consequential, punitive, or treble damages, however caused, arising out of or relating to use of this product. This product is not for resale. Any modification of the antibody for commercial purposes is prohibited.