

FGFR Human Antibody Profiler Set (MM-0313)



Catalog #: CR - 100

Size: 6 x 20 µg

Product Information

Name: FGFR Human Antibody Profiler Set

Antigen: Human FGFR1c, 2b, 2c, 3b, 3c & 4

Isotype: Human IgG1; custom orders also available as mouse IgG1, single chain IgG1 & single chain human-mouse IgG2a

Reactivity: Human, mouse (except FGFR3b)

Clonality: Monoclonal

Source: Human (Expi293 cell line by Life Technologies)

Applications: ELISA and Flow Cytometry

Concentration: Lyophilized protein A-purified Antibody in DPBS pH 7.4; no preservatives added

Handling: Lyophilized antibody can be kept at 4°C for 3 months. To avoid freeze-thaw cycles, reconstituted antibody should be resuspended in H₂O and aliquoted before freezing for short term (-20°C) or for long term storage (-80°C). For maximum recovery of products, centrifuge the vial prior to removing the cap. Further dilutions can be made in assay buffer. A final stock concentration of 1 µg/µl is recommended.

Representative data

Capture ELISA

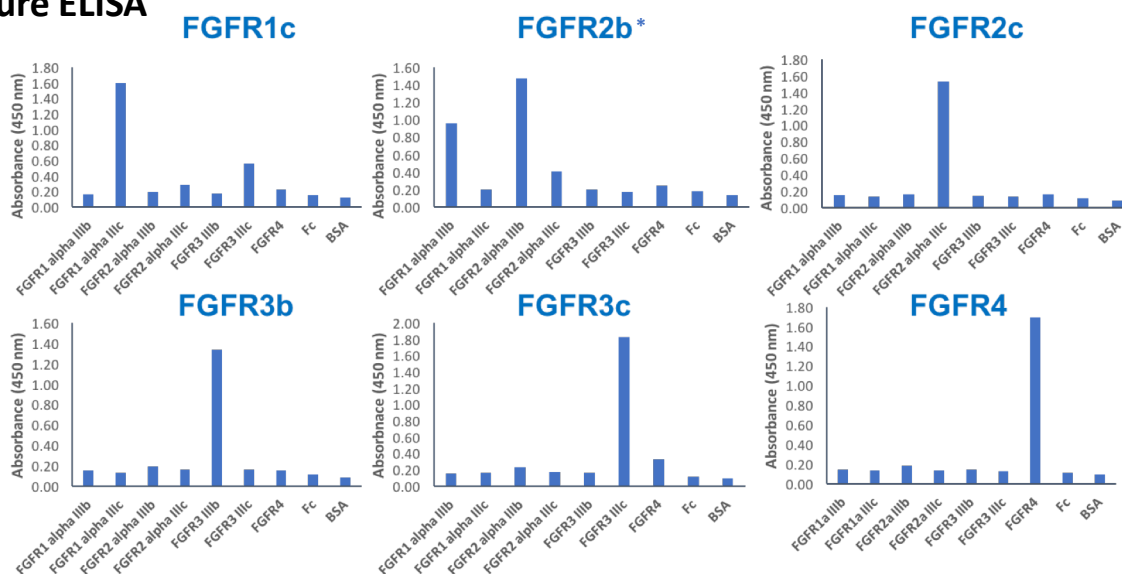


Figure 1: Isoform-specificity of the FGFR antibody panel:

1 µg/mL of FGFR protein family antigens or control proteins (Fc and BSA) were adsorbed onto maxisorp plates, blocked with PBS + 0.5% BSA (PB), and washed 3 times with PBS + 0.05% Tween-20 (PT). Anti-FGFR hIgG1 antibodies were used at the following concentrations: 0.1 µg/ml for FGFR1c, 0.1 µg/ml for FGFR2b, 0.2 µg/ml for FGFR2c, 0.2 µg/ml for FGFR3b, 1 µg/ml for FGFR3c, 0.2 µg/ml for FGFR4. Antibody incubations were performed in PBS for 30 min, shaking RT, washed 6 times with PT. Anti-human kappa-HRP (1:5000 in PB) was incubated for 30 min, shaking RT, washed 6 times with PT. Colorimetric HRP reagents allow for absorbance readings at 450 nm.

*Note: while the anti-FGFR2b antibody binds to its specific target (FGFR2b antigen), please note that it also cross-reacts to FGFR1b

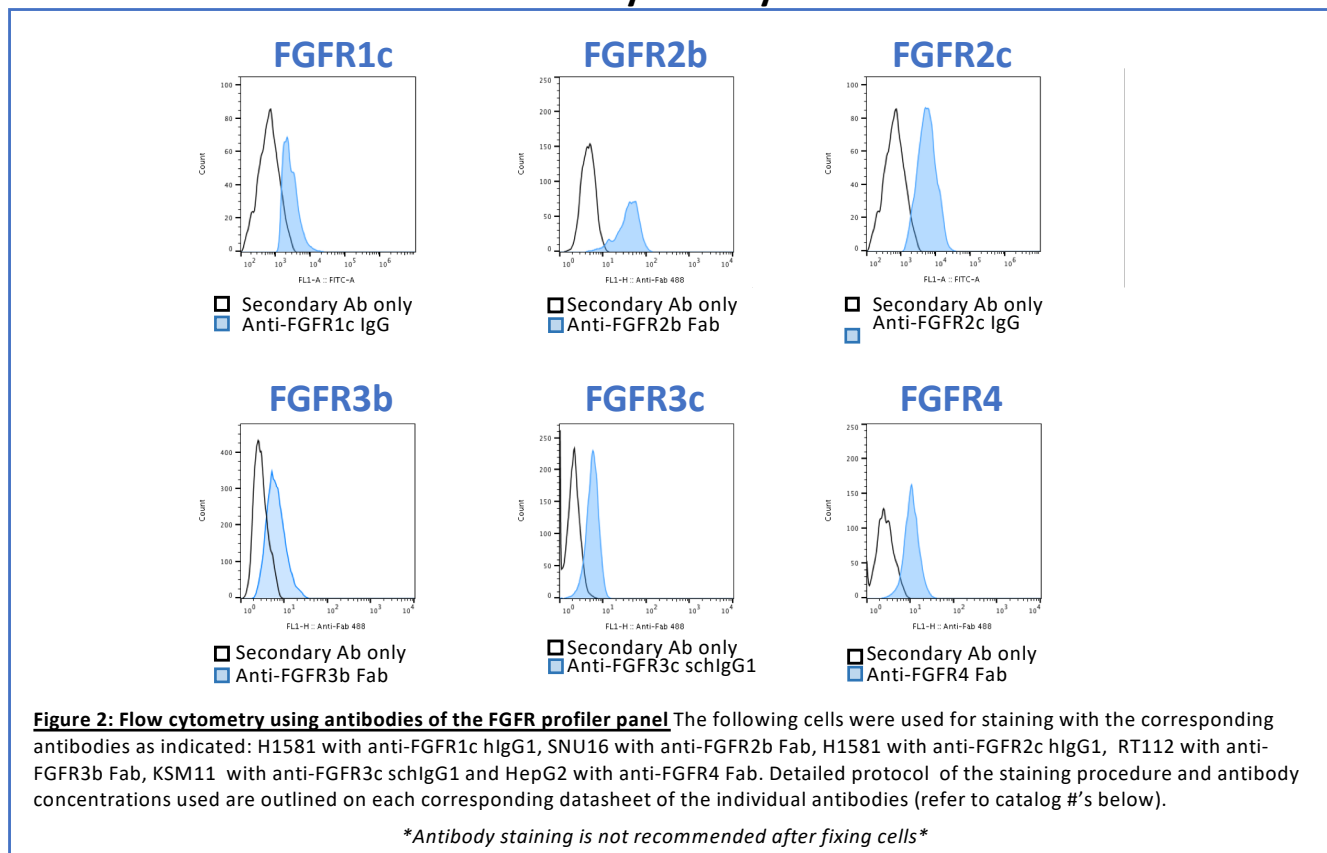
Optimal dilution of the antibody to be determined by the user

Limitations and Liability

For research use only not for human use; Manufactured by CCAB under a license for use of Expi293 cells (Life Technologies). CCAB is not responsible under any circumstances for any lost profit, loss of business, or any form of indirect, special, incidental, consequential, punitive, or treble damages, however caused, arising out of or relating to use of this product. This product is not for resale. Any modification of the antibody for commercial purposes is prohibited.

Representative data

Flow Cytometry



Optimal dilution of the antibody to be determined by the user

Antibodies in this profiler set also sold individually

Catalog #	Antibodies
CR-008	FGFR1c
CR-009	FGFR2b
CR-010	FGFR2c

Catalog #	Antibodies
CR-011	FGFR3b
CR-012	FGFR3c
CR-013	FGFR4

Limitations and Liability

For research use only not for human use; Manufactured by CCAB under a license for use of Expi293 cells (Life Technologies). CCAB is not responsible under any circumstances for any lost profit, loss of business, or any form of indirect, special, incidental, consequential, punitive, or treble damages, however caused, arising out of or relating to use of this product. This product is not for resale. Any modification of the antibody for commercial purposes is prohibited.