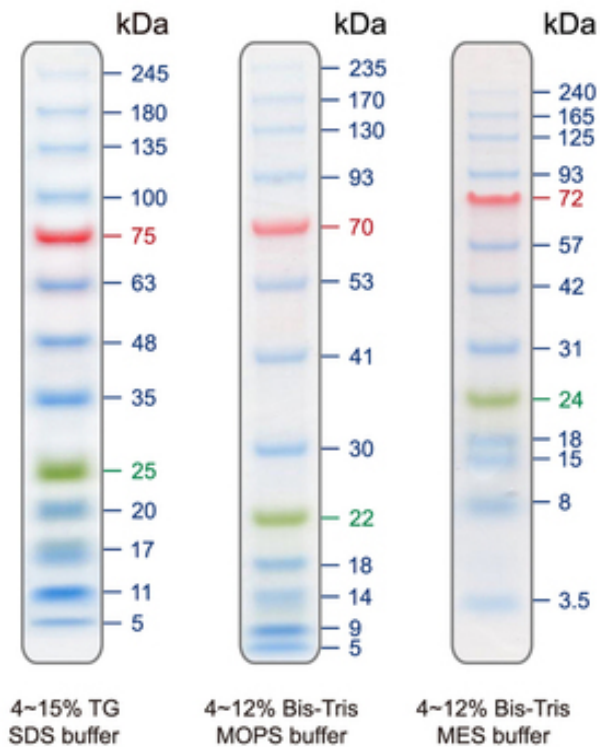


# Buy 6

# BLUelf Protein Markers...

(500 uL; 3-5 uL loading volume)



- **Wide range:** 5 to 245 kDa
- **Reference Bands:** One Green at 25 kDa, one Red at 75 kDa
- **Ready to Use:** Supplied in loading buffer for direct loading on gels
- **Clear Bands:** 13 sharp bands in three color protein standard for easy visualization
- **Quality control:** Tested on lot-to-lot basis to ensure consistent product quality
- **Prestained:** Yes

Cat# PM008-0500

...and

# Get 3 FOR FREE\*



\*Contact Van at [van@froggabio.com](mailto:van@froggabio.com) with proof of purchase for free units

**Toll Free: (877) 318-7277 | [www.froggabio.com](http://www.froggabio.com)**

Prices are valid until Jan 31, 2023. Price changes and/or early termination of this promotion may occur at any time. While quantities last. Offers do not combine and/or stack.